

09-01-2013



BRAKING SET

for ROBIN DR400

Delivered with an EASA Form1



£1250 + VAT
Now available

**QUALITY
OPTIMIZATION
PERFORMANCE
RELIABILITY**

***Landing distance decreased
Elimination of the fire risk
Reduced maintenance costs***

**BERINGER agreements:
EASA Part 21G
APDOA**



Testimonial: Emmanuel , flight instructor at the Aéro Club Alpin in Tallard and Alain, treasurer:

« We have now been flying for 2 month on a DR400 equipped with the new BERINGER braking system and we are more than satisfied: the braking is way more powerful, more adjustable, very easy to use. The aircraft brakes in line without any vibration. It is a real attractive feature for the club, especially for a flight school aircraft since it clearly increases the safety at landing. I think that the purchase cost will be soon paid off thanks to the lower maintenance costs. »

Advanced technology since 1985

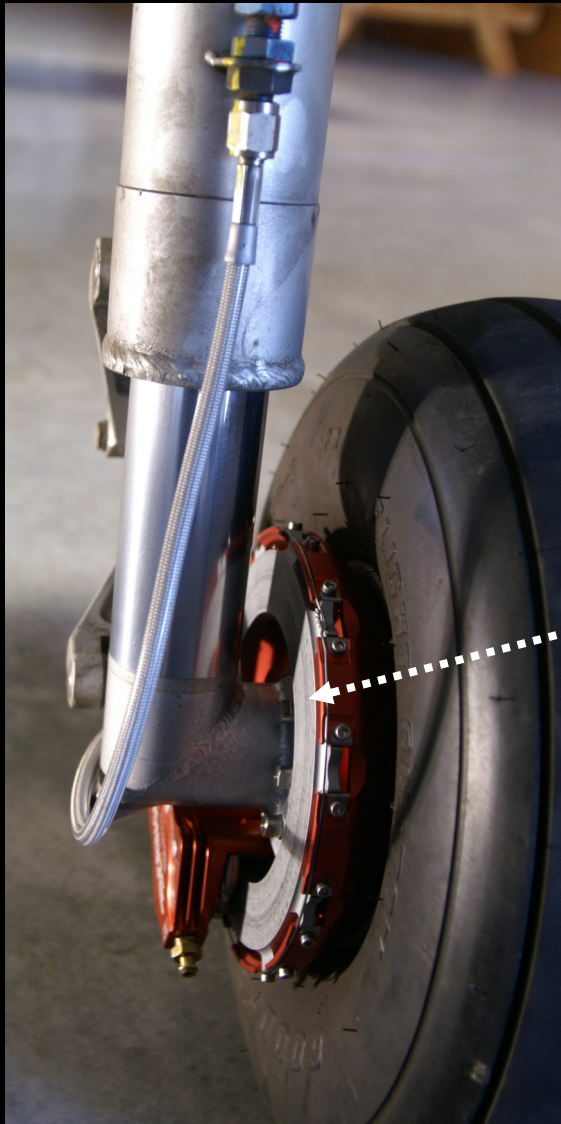
tel: +33 4 92 20 16 19 www.beringer-aero.com contact@beringer-aero.com

BRAKING SET

for ROBIN DR400

COMPOSITION OF THE SET:

2 High Energy calipers with 2 pistons each
2 inner bowls supporting the discs
2 steel chrome molybdenum discs
Sintered metal brake pads, long lifespan
with thermal insulation wedges
Stainless steel PTFE brake hose, high
pressure and hydraulic fittings
Sleeve with specific set of tools



The brake discs are made in steel chrome molybdenum and are floating
→ No vibration at braking due to disc deformation
→ The disc can expand when it heats up without any strength and avoid any buckling or crack

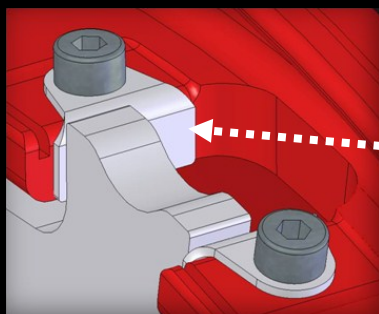
The supporting bowls are CNC machined from billet aluminum:

→ Manufacturing process allowing two to three times more resistance compared to cast parts.

The calipers are machined in a specific alloy for high temperatures (used on supersonic aircraft leading edges).

Integral anodization:

→ Excellent protection against corrosion



High strength stainless steel protecting clips:
→ Reduced wear
→ No noise at taxiing

2 piston High Energy caliper with
coolings fins
AEROTEC® patent

